

## replaygel

- Dielectric strength: 24 kV/mm
- Mixing ratio 1:1
- Working time at 23 °C: 10 min
- Polymerisation time at 23 °C: 25 min
- Temperature of use: from -60 to 200 °C
- Colour: Light green
- Non-hazardous product under Directives CE 67/548/CEE and 1999/45/CE



# REPLAY GEL

**Repositionable re-enterable two-component silicone gel**  
for insulated filling and sealing - in bottles



### Applications

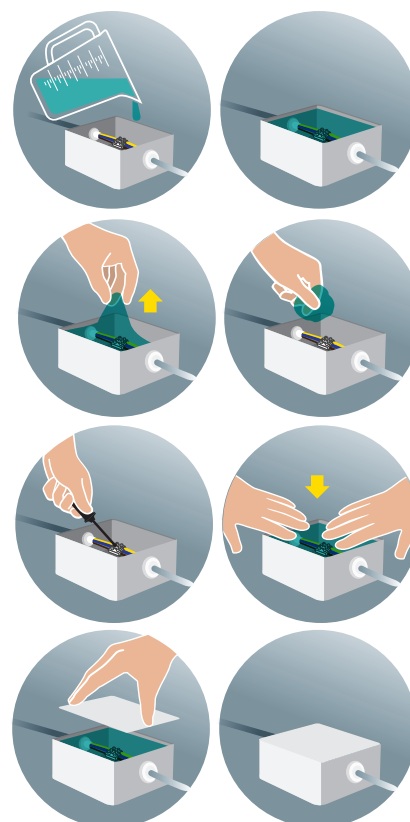
- Filling housings and junction boxes
- Insulation of .6/1 kV electrical connections
- Insulation of electronic circuit boards and components
- recommended for difficult installation conditions
- Recommended for vertical or inverted horizontal use

### Advantages

- **Repositionable**
- Non-toxic
- **Re-enterable**
- Eco-friendly
- Easy to pour
- No waste thanks to the separate bottles and measuring jug
- Excellent electrical insulation
- Protection from the elements (rain, humidity) dust and the intrusion of animals, insects or leaves
- Transparent
- No expiry date
- Reusable after opening

### Package contents

- 2 separate transparent bottles
- Measuring jug
- Instructions



FILLING CAPACITY						
item	Volume (litres)	 round boxes Ø x h (mm)		 square boxes A x B x h (mm)		
		65x35	80x40	100x100x50	120x80x50	150x110x70
REPLAYGEL 1L	1	14	10	2	2	1
REPLAYGEL 2L	2	28	20	4	4	2

Quantities calculated for the complete filling of empty boxes