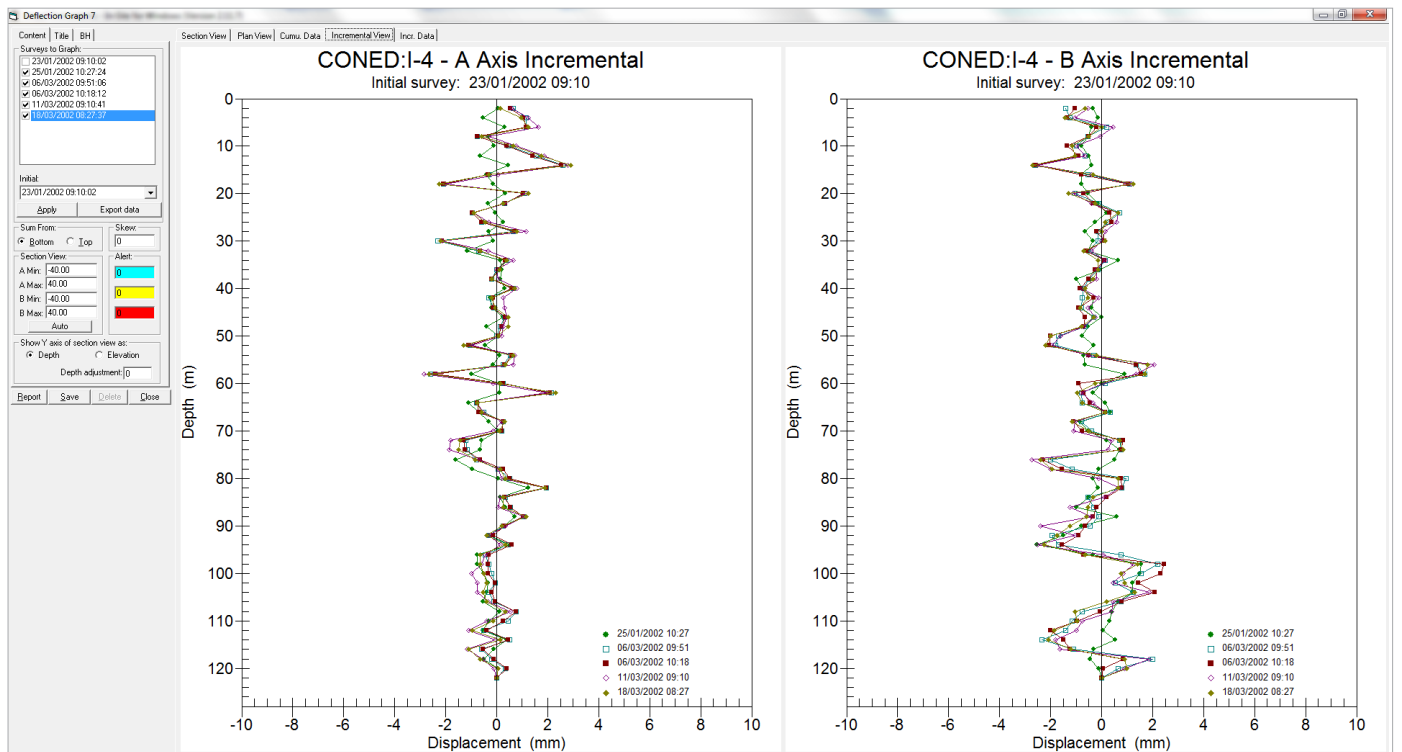


## C13 'IN-SITE' SOFTWARE



### Description

'In-Site' software is a powerful data management tool used for processing inclinometer data. 'In-Site' facilitates automatic data reduction, incorporating graphing, reporting and presentation features.

'In-Site' software can be used with most commercially available inclinometer systems and is not specific to any one type of inclinometer casing.

'In-Site' allows the user to import data directly from the inclinometer Field PC and display incremental, cumulative and absolute profiles, as well as a plan view of the borehole installation, all in graphical format.

### Features

- Easy exportation of trend graphs
- Simple icons and menus
- Strata can be easily applied with fill patterns and colours to define
- Report function
- Alert functions
- Handles data from all popular types of inclinometers
- Probes of any gauge length supported
- Supports metric and imperial units

### Benefits

- Downloaded data can be viewed in various formats
- Exported graphs can be viewed without the use of 'In-Site' software
- Easy handling and presentation of data
- Simple to use; no need to navigate menus
- Reports include cumulative displacement plots
- Alerts enable critical monitoring
- Versatile



Comprehensive information about this product and our full range is available at [www.itmsoil.com](http://www.itmsoil.com)  
If you would like to speak with someone directly please call +44 (0)1825 765044 or email [sales@itmsoil.com](mailto:sales@itmsoil.com)

## Operation

'In-Site' has been developed for the purpose of importing and analysing inclinometer data in an efficient and user friendly manner.

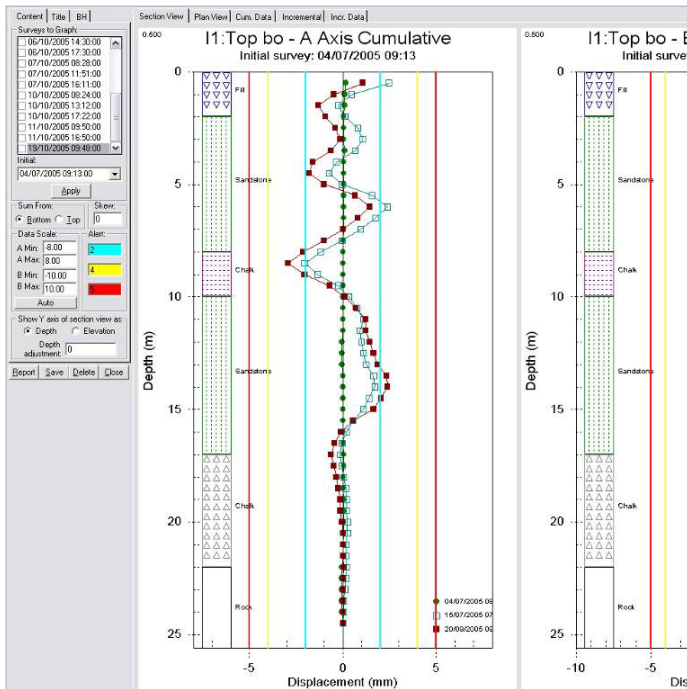
A simple, icon-based system comprising a quick start menu, allows easy database set up and data import from most commercially available inclinometer systems, without having to navigate through menus. More than one database may be viewed at a time and data can be dragged and dropped.

Once data retrieval is complete, simply right click on the borehole name to view a deflection graph. When the deflection graph is displayed, a number of analysis features and interpretation views are available, including cumulative and incremental displacement and absolute position.

'In-Site' has the facility to select which surveys to display in the graph, which makes data management and analysis easier, especially when dealing with long-term readings on the same borehole.

Visual alert levels can be set for critical monitoring and pattern and colour options allow a clear definition of different strata. Notes can be defined to add any relevant information and a company logo can also be imported.

'In-site' compiles all these features into a condensed report that displays cumulative and incremental displacement, plan view and numerical data, all exported to pdf, html or printed out for easy distribution.



## Applications

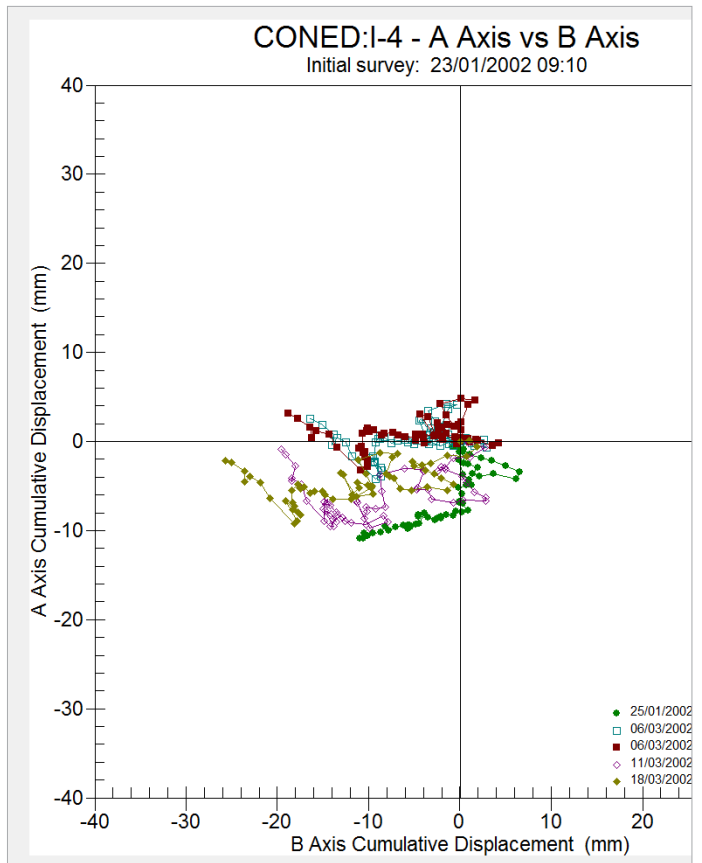
'In-Site' can be used with most commercially available inclinometer systems. It is not specific to any one type of inclinometer casing and can be used with analogue instruments.

'In-Site' is ideal for analysing large volumes of data into presentation formats.

## Associated products

For details on:	Catalogue code:
Easy Connect (EC) Inclinometer Casing	C9
Standard Inclinometer Casing	C18
Vertical Digital Inclinometer System	C17
Horizontal Digital Inclinometer System	C19-1
Inclined Digital Inclinometer System	C19-2

View our full product range on [www.itmsoil.com](http://www.itmsoil.com)



THE TECHNICAL RATING FOR THIS PRODUCT:

**INTERMEDIATE**



As the correct installation of any monitoring sensor or system is vital to maximise performance and accuracy, itmsoil makes the following recommendations, for the skill level of the installation contractor.

### ADDITIONAL SUPPORT

itmsoil offer installation and monitoring services to support this system. For more information please email : [sales@itmsoil.com](mailto:sales@itmsoil.com) or call **+44 (0) 1825 765044**

**ADVANCED**



The installer is trained and experienced in the installation of this type of instrument or systems, and is ideally a specialist Instrumentation and Monitoring contractor.

**INTERMEDIATE**



The installer already has previous experience and/or training in the installation of this instrument or system.

**BASIC**



As a minimum the installer has read and fully comprehends the manual, and if possible has observed these instruments or systems being installed by others.

## Specifications

### 'In-Site' Software

Data entry	Direct retrieval   File import   Manual entry
Graph export formats	HTML   Print to PDF
Units supported	Metric   Imperial
Number of licences per package	1-2   3-4   5-8   9-15
Gauge length	No length restrictions
Inclinometer systems	Most commercially available systems supported
Alerts	Yes
Interpretation views	Cumulative Displacement   Plan View   Incremental Displacement   Absolute Position

## Ordering Information

### 'In-Site' Inclinator Data Management Package

Priced per dongle licence; includes installation CD, manual & one dongle per licence. Multiple licences are available at a reduced rates

C13-1	'In-Site' package with 1 dongle licence key
-------	---

### Manual

MAN-179	'In-Site' Software
---------	--------------------

**itmsoil**

Bell Lane, Uckfield, East Sussex  
TN22 1QL United Kingdom

t: +44 (0) 1825 765044  
f: +44 (0) 1825 744398

e: [info@itmsoil.com](mailto:info@itmsoil.com)  
w: [www.itmsoil.com](http://www.itmsoil.com)